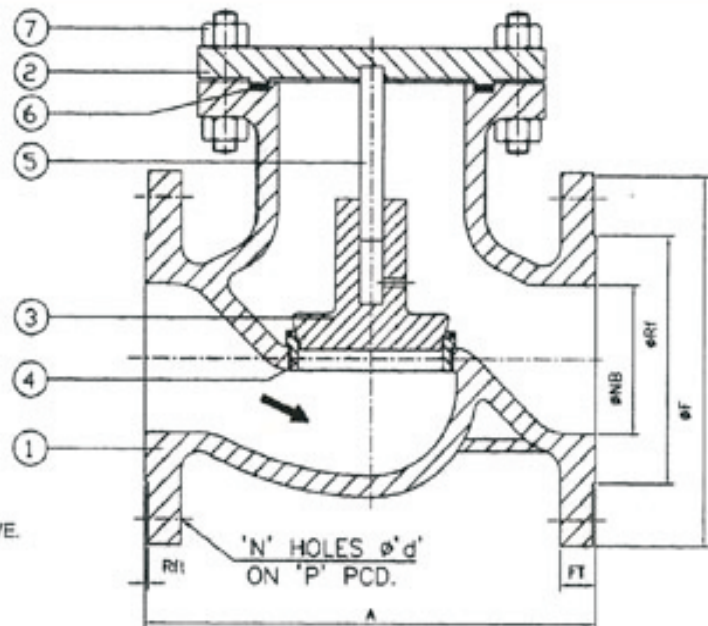


# LIFT UP TYPE CHECK VALVE (NRV) FLANGE END - HORIZONTAL APPLICATION

DIN STD :  
ND 16 / ND- 40



### Technical Data :

<b>CONSTRUCTION</b>	: PISTON TYPE PLUG, RENEWABLE SEATRING & BOLTED COVER LIFT CHECK VALVE.
<b>DESIGN &amp; MFG. CODE</b>	: BS 1868
<b>INSPECTION &amp; TESTING</b>	: API 598 / BS 6755 PART 1
<b>FACE TO FACE</b>	: DIN 3322
<b>END CONNECTION</b>	: DIN 3322

### BILL OF MATERIAL

Sr.	PART NAME	MATERIALS
1	BODY	C.I. / WCB / CF8 / CF8M
2	COVER	C.I. / WCB / CF8 / CF8M
3	DISC	WCB + 13% Cr. FACING
4	SEATRING	AISI 410/CS+13% Cr. FACING/INTEGRAL
5	GUIDE STEM	AISI 410/AISI 304/AISI 316
6	GASKET	CAF/SPIRAL WOUND SS 304 + CAF
7	STUD/NUT	ASTM A 193 B7/194 2H

Size	ØNB	A	ØF	FT	ØRf	Rft	'P'	Ø'd'	'N'
25	25	160	115	18	68	2	85	14	4
40	38	200	150	18	88	3	110	18	4
50	51	230	165	20	102	3	125	18	4
65	64	290	185	22	122	3	145	18	8
80	75	310	200	24	138	3	160	18	8
100	100	350	235	24	162	3	190	22	8
125	125	400	270	26	188	3	220	26	8
150	150	480	300	28	218	3	250	26	8
200	200	600	375	34	285	3	320	30	12

Primary Service Rating & Temperature			
ND 16	16 Kg/cm <sup>2</sup>	220°C	
ND 40	40 Kg/cm <sup>2</sup>	450°C	
Hydraulic Test Pressure			
STD	BODY	SEAT	AIR
ND 16	32 Kg/cm <sup>2</sup>	16 Kg/cm <sup>2</sup>	7 Kg/cm <sup>2</sup>
ND 40	80 Kg/cm <sup>2</sup>	40 Kg/cm <sup>2</sup>	7 Kg/cm <sup>2</sup>

### AVAILABLE OPTION :

- Other alloys
- Butt weld end
- Seat weld

"Apex" make

\* All dimensions are in m.m.



# APEX ASSOCIATES

GH-84, Scheme No.54, Vijay Nagar, Indore - 452010 (M.P.)  
Ph. 0731-4004371, 2557094, 9826647871 Tele Fax. 0731-4004371  
E-mail : apexassociates@rediffmail.com