

GLOBE VALVE FLANGE END

ASA 150 #, 300 #
Suitable to 450°C



Technical Data :

CONSTRUCTION : 'OS' & 'Y' TYPE, RISING STEM,
RISING HANDWHEEL, BOLTED BONNET,
RENEWABLE SEAT RING & BACKSEAT
ARRANGEMENT OF GLOBE VALVE

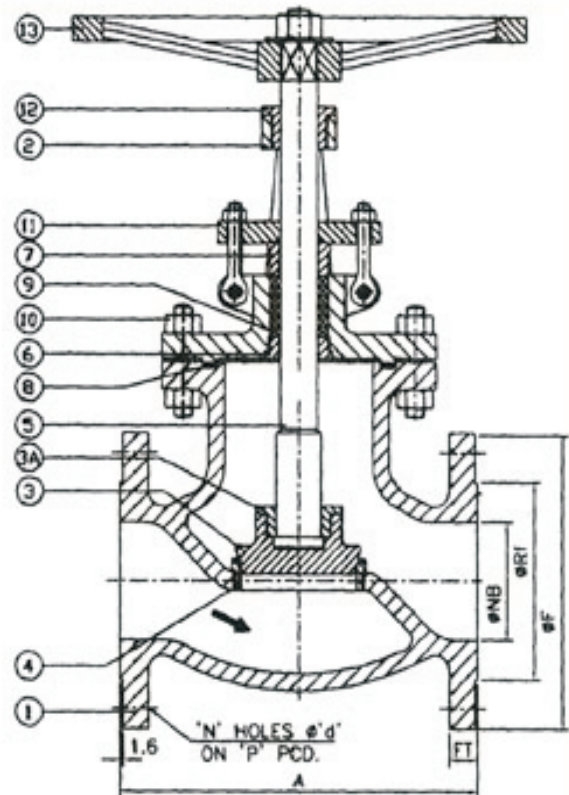
DESIGN & MFG. CODE : BS 1873
INSPECTION & TESTING : API 596 / BS 6755 PART 1
FACE TO FACE : ASME B 16.10
END CONNECTION : ANSI B 16.5 R/F CONC SERRATED

BILL OF MATERIAL

Sr.	PART NAME	MATERIALS
1	BODY	C.I. / WCB / CF8 / CF8M
2	BONNET	C.I. / WCB / CF8 / CF8M
3	DISC	SS 410/ WCB + 13% Cr. FACING / STELLITTED
3A	DISC NUT	SS 410/ WCB + 13% Cr. FACING / STELLITTED
4	SEATRING	SS 410/ WCB + 13% Cr. FACING / STELLITTED
5	STEM	AISI 410 / AISI 304 / AISI 316
6	BACKSEAT BUSH	AISI 410 / AISI 304 / AISI 316
7	GLAND BUSH	AISI 410 / AISI 304 / AISI 316
8	GASKET	CAF/SPIRAL WOUND SS 304 + CAF
9	GLAND PACKING	GRAPHITE ASBESTOS
10	STUD/NUT	ASTM A 193 B7 / 194 2H
11	GLAND FLANGE	CARBON STEEL
12	YOKE SLEEVE	EN-1A (CARBON STEEL)
13	HANDWHEEL	C.I./WCB

CLASS 300

Size	NB	A	F	FT	Rf	'P'	'd'	'N'
25	25	203.2	124	17.5	51	88.9	19	4
40	38	228.6	155.5	20.6	73	114.3	19	4
50	50	266.7	165.1	22.2	92	127	22.2	8
65	63	292.1	190.5	25.4	105	149.4	22.2	8
80	76	317.5	209.5	28.6	127	168.1	22.2	8
100	100	355.6	254	31.8	157	200.1	22.2	8
150	150	444.5	317.5	36.6	216	269.8	22.2	12
200	200	558.8	381	41.2	270	330.2	25.4	12
250	250	622.3	444.5	47.8	324	387.4	28.6	16
300	300	711.2	520.7	50.8	381	450.9	31.8	16



CLASS 150

Size	NB	A	F	FT	Rf	'P'	'd'	'N'
25	25	127	108	11.2	51	79.2	16	4
40	38	165	127	14.3	73	98.5	16	4
50	50	203	152.4	15.9	92	120.6	19	4
65	63	216	178	17.5	105	139.7	19	4
80	75	241	190.5	19.1	127	152.4	19	4
100	100	292	228.6	23.9	157	190.5	19	8
125	125	356	254	23.9	186	215.9	22.2	8
150	150	406	279.4	25.4	216	241.3	22.2	8
200	200	495	343	28.6	270	298.5	22.2	8
250	250	622	406.4	30.2	324	362.0	25.4	12
300	300	698.5	482.6	31.8	381	431.8	25.4	12

AVAILABLE OPTION :

- Special mat. on request
- Actuator operated
- Bellow sealed globe valves
- Butt weld end
- IBR Certified
- Half or full Stellited

Hydraulic Test Pressure		
Rating	Body	Seat
ASA 150 #	32 Kg/cm ²	22 Kg/cm ²
ASA 300 #	78 Kg/cm ²	58 Kg/cm ²

* All dimensions are in m.m.

"Apex" make



APEX ASSOCIATES

GH-84, Scheme No.54, Vijay Nagar, Indore - 452010 (M.P.)
Ph. 0731-4004371, 2557094, 9826647871 Tele Fax. 0731-4004371
E-mail : apexassociates@rediffmail.com